

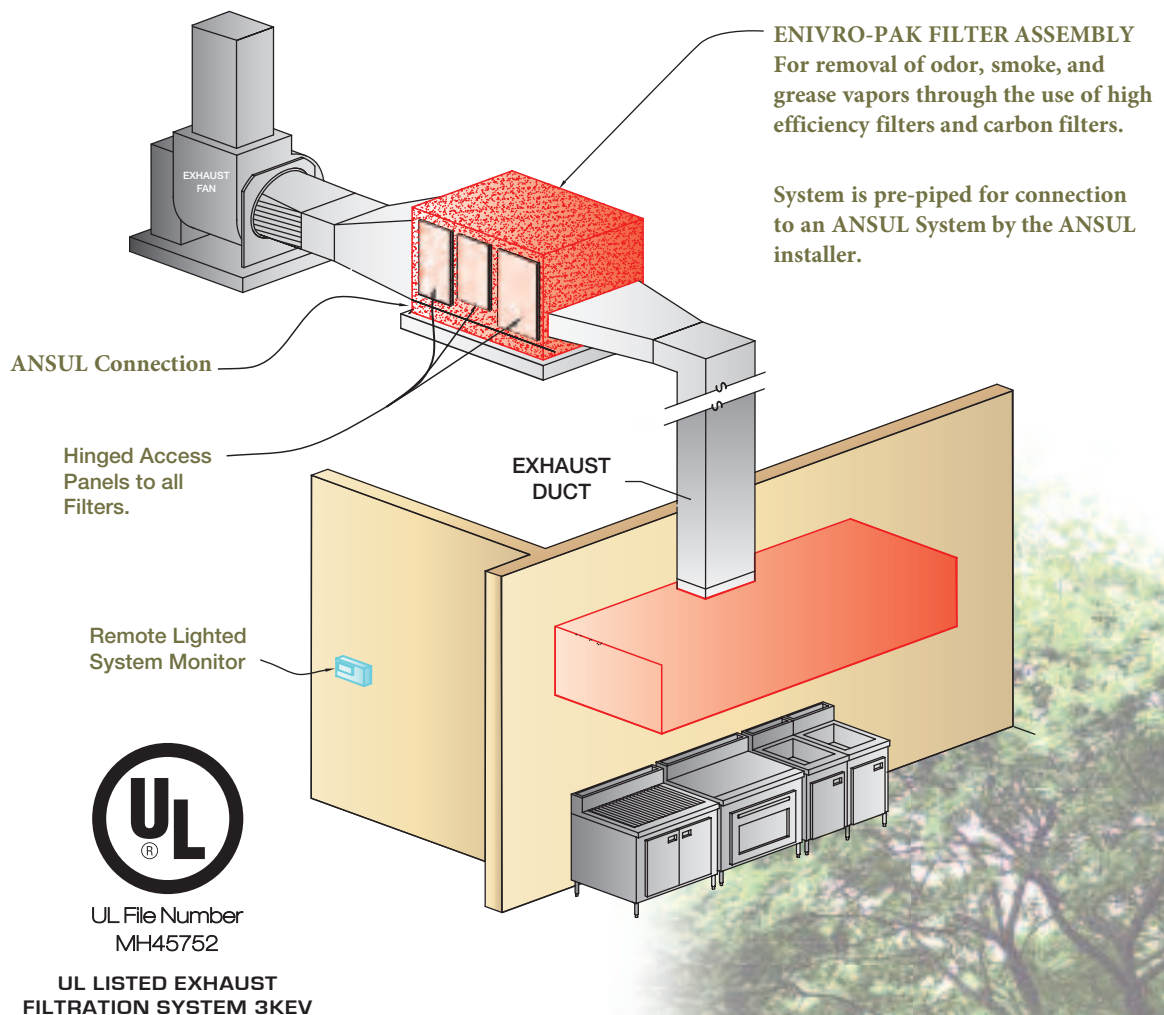
# MOLITRON ENVIRO-PAK FILTER ASSEMBLY

The Molitron UL Listed Enviro-Pak Filter Assembly (EPFA) is 18 gauge, type 304 stainless steel enclosure fitted with top, bottom, and end channels for holding in place pre-filters and 95% or higher Class One filter media for removing odor, smoke, and grease vapors from kitchen exhaust air.

Cooking emissions can become a neighborhood nuisance if not properly controlled. Visible smoke & odor may alert authorities to possible compliance problems.

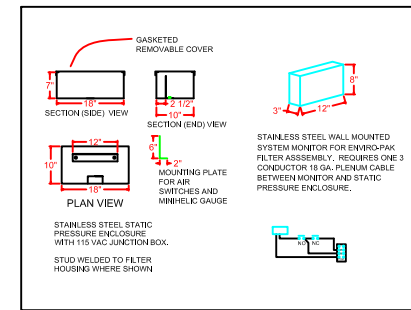
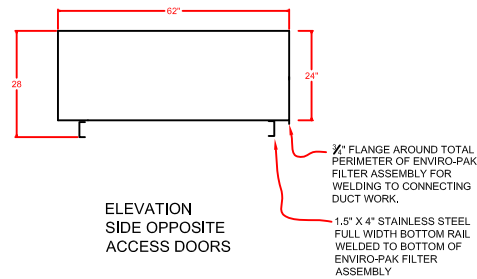
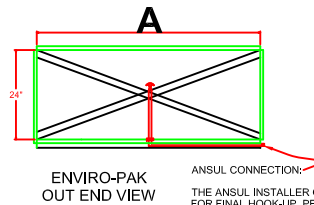
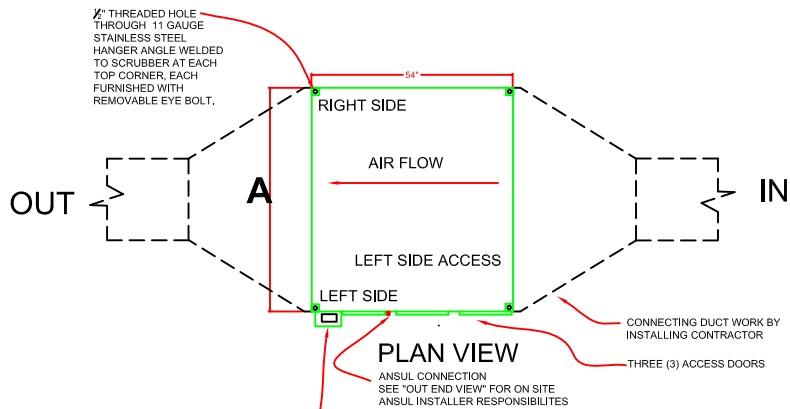
An **ENVIRO-PAK FILTER ASSEMBLY** removes these concerns and **CREATES CLEAN AIR!**

Designed especially for light duty commercial kitchens, the **ENVIRO-PAK FILTER ASSEMBLY** can be located at any point, indoor or outdoor, between the kitchen hood and the point of discharge of the exhaust air into the atmosphere.

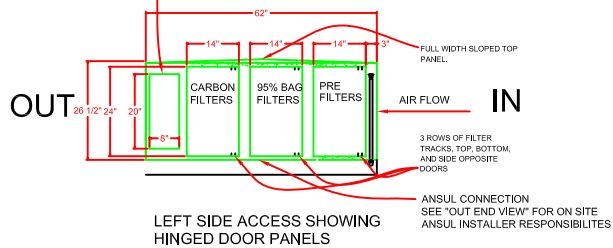


**MOLITRON**   
COMPANY INC.

303-969-8888 • molitron.com • cleanair@molitron.com



ENCLOSURE FOR TRANSFORMER, STATIC PRESSURE PROBE AND WIRING CONNECTIONS TO SYTEM MONITOR.  
REQUIRES ONE 115 VAC FOR 24 VAC TRNSFORMER



Model Number	CFM	A Width	Weight	Pre-Filters		High Eff. Filters	
				24 x 12	24 x 24	24 x 12	24 x 24
EPFA-24	1,800	24	250		1		2
EPFA-36	2,700	36	350	1	1	2	2
EPFA-48	3,600	48	450		2		4
EPFA-60	4,500	60	550	1	2	2	4
EPFA-72	5,400	72	650		3		6
EPFA-84	6,300	84	750	1	3	2	6
EPFA-96	7,200	96	850		4		8
EPFA-108	8,100	108	950	1	4	2	8
EPFA-120	9,000	120	1,050		5		10
EPFA-132	9,900	132	1,150	1	5	2	10
EPFA-144	10,800	144	1,250		6		12

NOTE: SPACE SAVINGS CAN BE ACHIVED WITH STACKING (ABOVE 7,000 CFM) . PLEASE CONTACT FACTORY FOR MORE INFORMATION.

FILTER ASSEMBLY SHALL BE ALL WELDED 18 GA STAINLESS STEEL CONSTRUCTION, FURNISHED WITH THREE REMOVEABLE DOORS FOR ACCESS TO INTERNAL FILTERS

TRACK WIDTH: 1" TOP, BOTTOM AND SIDE OPPOSITE ACCESS DOORS. TRACK HEIGHT 5/8"

TRACKS TO BE SEALED TO OUTSIDE SKIN WITH HIGH TEMP. SILICONE

SERVICE ACCESS SIDE OF SCRUBBER REQUIRES A MINIMUM OF 30" FREE SPACE BETWEEN SCRUBBER AND ANY ADJACENT WALLS.

ALL OTHER SIDES MUST BE A MINIMUM OF 18" CLEARANCE TO COMBUSTIBLE MATERIALS AND BUILDING INSULATION OR 0" CLEARANCE TO NON-COMBUSTIBLE MATERIALS.

ENVIRO-PAK FILTER ASSEMBLY, SYSTEM FURNISHED WITH TWO MASTERSEAL PRE-FILTERS, TWO 24 X 24 X 12" 95% BAG FILTERS AND TWO CARBON FILTERS.

BASIC FOOTPRINT FOR THIS ASSEMBLY IS "A FROM TABLE" BY 62". 1.5" X 4" STAINLESS STEEL CHANNELS TO BE WELDED TO BOTTOM OF HOUSING.

SIZE EXHAUST FAN FOR 2.5" W.G.S.P. PLUS HOOD AND DUCT STATIC LOSS.

EXHAUST FAN SHOULD BE 1.) UL LISTED FOR KITCHEN EXHAUST APPLICATIONS. 2.) A BACKWARD INCLINED UTILITY TYPE FAN WITH EASILY ADJUSTABLE RPM.




UL File Number  
MH45752  
UL LISTED EXHAUST  
FILTRATION SYSTEM 3KEV

**INSTALL AND USE ONLY IN ACCORDANCE WITH MOLITRON INSTALLATION AND MAINTENANCE INSTRUCTIONS.**

INSTALLING CONTRACTOR IS RESPONSIBLE FOR ANY LOCAL CODE REQUIREMENTS.

**MAINTAIN A MINIMUM AIR SPACE CLEARANCE OF 18" TO COMBUSTIBLE MATERIALS AND BUILDING INSULATION.**



303.969.8888  
cleanair@molltron.com  
molltron.com

DRAWN BY	SA	REVISIONS	BY
DATE	8/2016		
CHECKED BY	SA		
SCALE	As Shown		
JOB NAME		JOB NO. ITEMS	
EPFA WITH CARBON FILTERS			
FOR:		SHEET 1 OF 1	