

MOLITRON

COMPANY INC.



ODOR ABATEMENT SYSTEM



- Self-contained system for neutralizing offensive odors and smoke
- Reduces odor particles up to 95% and smoke particles up to 50%
- Easy installation and maintenance

molitron.com

Contact: 303.969.8888 | cleanair@molitron.com

MOLITRON ODOR ABATEMENT SYSTEM

SIMPLIFIED ODOR NEUTRALIZATION

The Molitron Odor Abatement System (MOAS) is designed to provide a totally self contained system for neutralizing offensive odors and smoke emanating from commercial exhausts or any other source of undesirable odors and smoke. The MOAS can be used independently, or with the Molitron Enviro-Clean Air Scrubber or Enviro-Pak Filter Assembly.

The Molitron Odor Abatement System can reduce up to 95% of the odor particles and up to 50% of the smoke particles. The exact reduction of smoke particles cannot be determined because of various cooking processes utilized and the variation in the efficiency of kitchen hood grease removal devices. However we recommend that the MOAS nozzles be located as closely as possible to the source of the contaminants, both odor and visible smoke particles, in order to maximize the effectiveness of the MOAS system.

The MOAS dispenses a neutralizing solution through nozzles located in the exhaust air stream. Chemical neutralization changes the particle's molecular structure, effectively modifying it. And, unlike chemical masking agents or perfumes that superimpose a pleasant fragrance on an unpleasant odor, odor neutralizers absorb and convert malodors resulting in a reduction in odor and smoke particles.

EASY INSTALLATION AND MAINTENANCE

All necessary components, except for the remote atomizing nozzles, are located in a stainless steel wall mounted cabinet. Utilities required are one 115 VAC electric service and one 1/4" cold water supply. Connect-ing the basic MOAS cabinet to the remotely located atomizing nozzles are one 1/4" OD liquid hose and one 3/8" OD air hose.

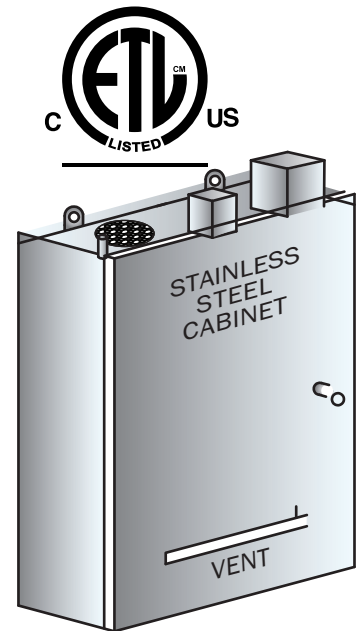
MOAS CONCENTRATE INFORMATION

The Molitron Odor Abatement System is one which automatically dilutes the MOAS concentrate for atomization into an exhaust air stream. The amount of concentrate required to neutralize all odors and smoke depends on the solution concentration setting and the length of time available to mix the atomized MOAS concentrate with the air stream before being released into the atmosphere. The amount of concentrate required is manually adjusted inside the MOAS cabinet. Satisfactory performance will result after the volume of concentrate is adjusted to the proper amount required to neutralize the odors and smoke in question. In most cases up to 95% of offensive odors and up to 50% of smoke particles can be neutralized.

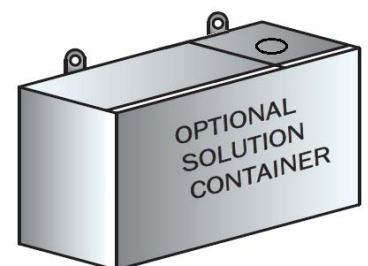
For greater efficiency with the least amount of product used, there should be a minimum of 10 feet of duct from the point of the atomization nozzle to the point of air discharge into the atmosphere. Increasing the duct length, to greater than 10 feet, increases efficiency because it allows more time for the neutralization process before discharging into the atmosphere.

ETL LISTING

The Molitron Odor Abatement System is ETL listed and tested to the following standards: UL 197: Commercial Electric Cooking Appliances
UL 710, Clause 43: Fire and Leakage Test of Fittings for Hood Penetrations



WALL MOUNTED 18 GA. STAINLESS STEEL CABINET, 24" WIDE, 32" HIGH, 8" DEEP APPROXIMATE WEIGHT: 100 LBS.



OPTIONAL: 10 GALLON SOLUTION CONTAINER, WALL MOUNTED 16 GA. SS, 24" WIDE, 12" HIGH, 8" DEEP APPROXIMATE WEIGHT: 20 LBS EMPTY, 100 LBS FULL.

MOLITRON ODOR ABATEMENT SYSTEM

The Molitron Odor Abatement System (MOAS) is designed to provide a totally self-contained system for neutralizing offensive odors and smoke emanating from commercial exhausts or any other source of undesirable odors and smoke. The MOAS can be used independently, or with the Molitron Enviro-Clean Air Scrubber or Enviro-Pak Filter Assembly.

Each system is furnished with two nozzles which are adequate for up to 6,000 CFM. Nozzles should be located as far as possible from the point of discharge to the atmosphere to allow for maximum neutralization of odors.

Satisfactory system performance can be increased or decreased by adjusting the dilution ratio set point located on the brass solution injector on the cold-water supply. Start up and calibration must be done in accordance with installation manual.

INSTALLATION INSTRUCTION FOR THE MISTING NOZZLES

PRIOR TO MOUNTING THIS NOZZLE ASSEMBLY TO THE EXHAUST DUCT, A 1-1/2" HOLE MUST BE CUT IN THE SIDE WALL OF THE EXHAUST DUCT. THE NOZZLE ASSEMBLY CAN THEN BE MOUNTED ON THE DUCT WITH THE SPRAY NOZZLE CENTERED OVER THE 1-1/2" PREVIOUSLY CUT HOLE.

MOUNTING THE NOZZLE ASSEMBLY REQUIRES WELDING STEEL STUDS TO THE DUCT SIDE WALL TO MATCH THE HOLES PROVIDED IN THE STAINLESS-STEEL MOUNTING PLATE.

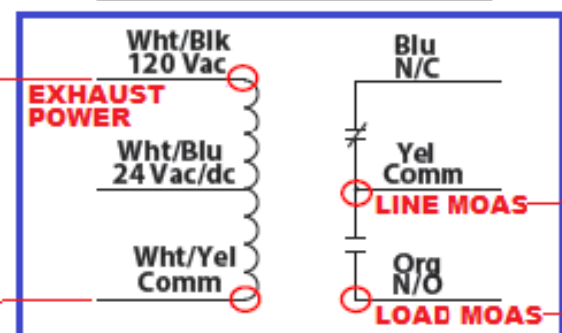
SHOULD NOZZLES REQUIRE SERVICING, THE NOZZLE AND MOUNTING PLATE ASSEMBLY CAN BE EASILY REMOVED FROM THE SIDE WALL OF THE DUCT SYSTEM.

THE SYSTEM IS PROVIDED WITH TWO SETS OF TUBING AS WELL AS THE NECESSARY FITTINGS TO CONNECT THE NOZZLES TO THE CONTROL CABINET.

2 MISTING NOZZLES ARE FURNISHED ATTACHED TO A 4 INCH SQUARE STAINLESS-STEEL PLATE. THIS PLATE IS FURNISHED WITH 8 HOLES AND IS MOUNTED TO THE OUTSIDE OF THE KITCHEN EXHAUST DUCT SYSTEM.

BUILDING ELECTRICAL PANEL
120 VAC SUPPLY CIRCUIT

MOAS AND EXHAUST FAN
INTERLOCK CONTROL RELAY



THIS RELAY PREVENTS THE MOAS FROM OPERATING UNNECESSARILY. WHEN THE EXHAUST FAN IS ENERGIZED, THE 120V RELAY POWER MUST BE ENERGIZED TO SUPPLY POWER TO THE MOAS.

OPTIONS FOR ENERGIZING THE RELAY

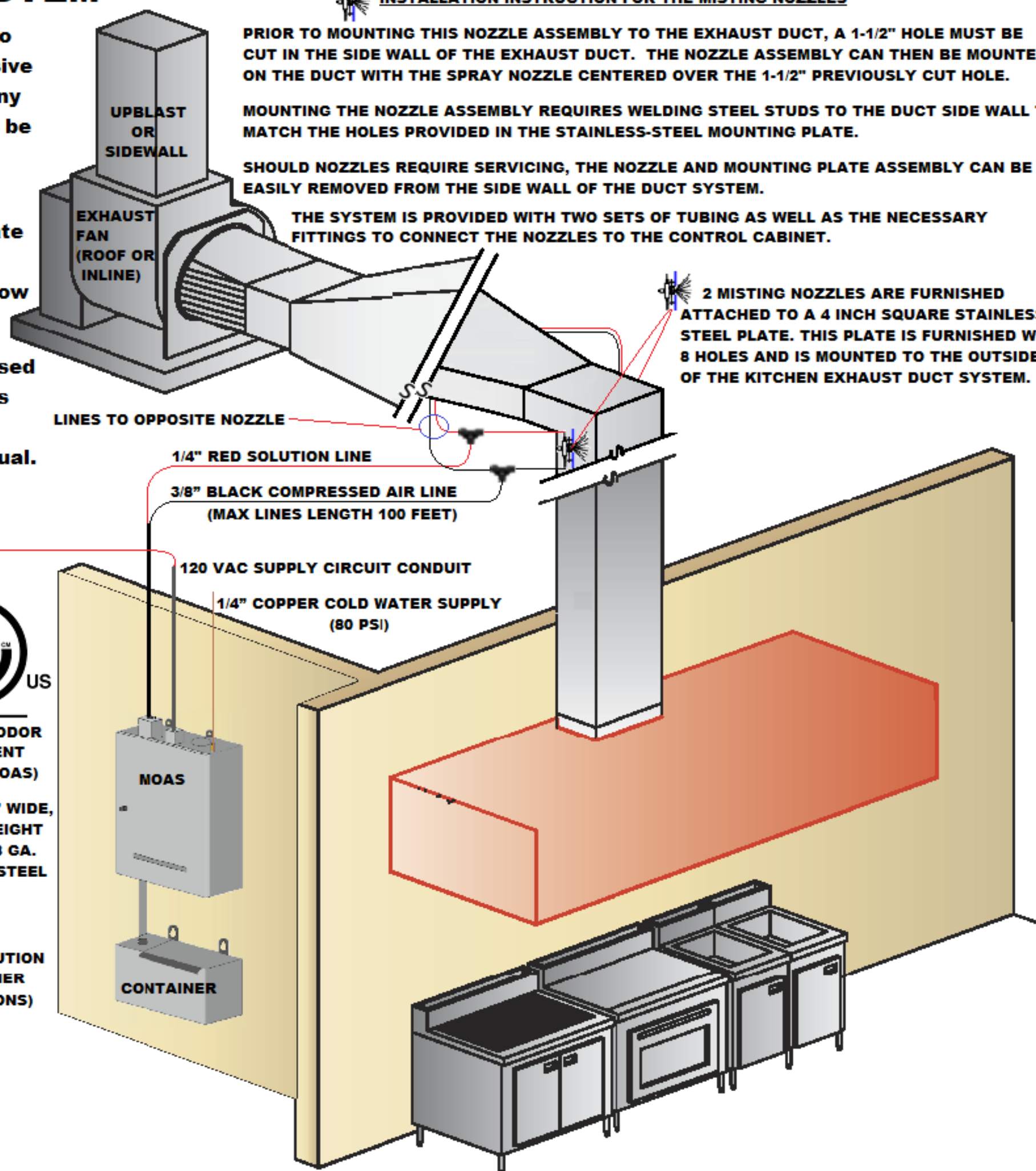
- PREFERABLY, USE THE 120V POWER FROM THE HOOD SWITCH USED TO ACTIVATE THE EXHAUST FAN MAGNETIC MOTOR STARTER COIL.
- FOR 208-230 VOLT EXHAUST FANS, USE ONE OF THE 120 VOLT PHASES



MOLITRON ODOR ABATEMENT SYSTEM (MOAS)

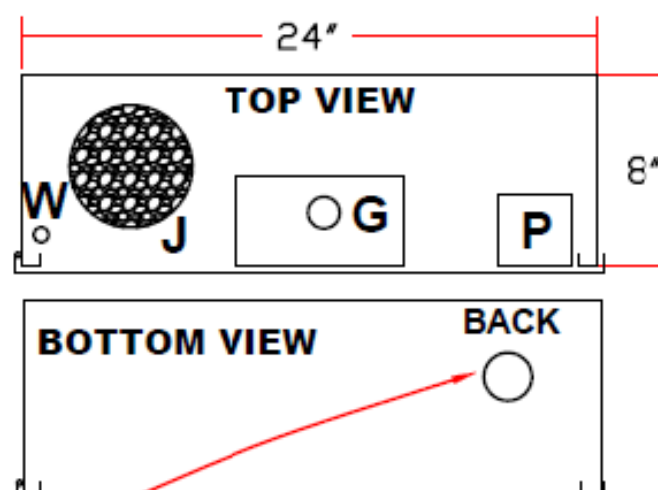
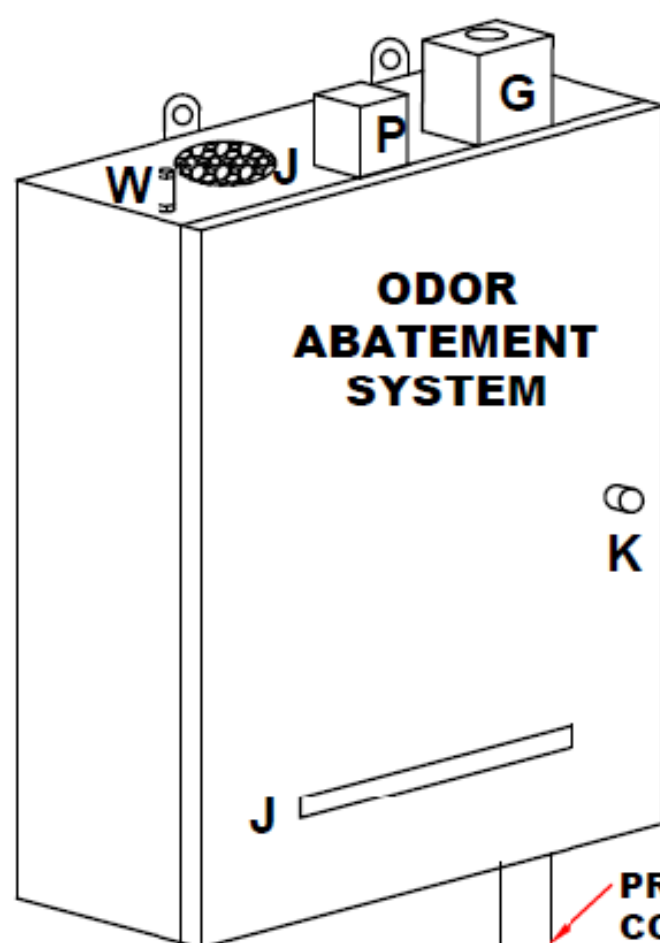
32" HIGH, 24" WIDE, 8" DEEP. WEIGHT 100 LBS. 18 GA. STAINLESS STEEL

MOAS SOLUTION CONTAINER (10 GALLONS)

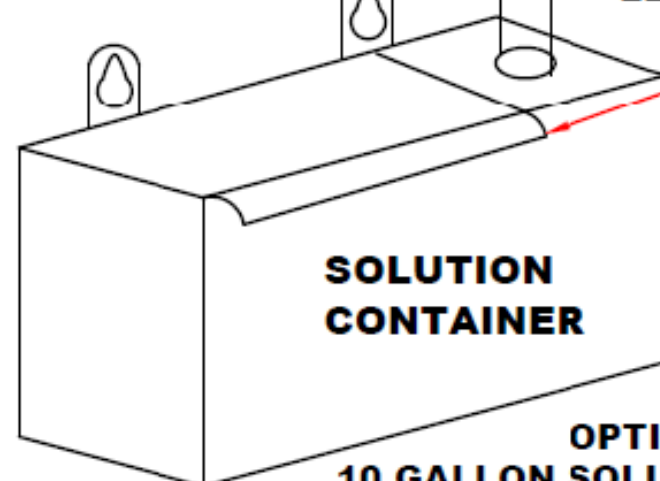


SPECIFICATIONS

WALL MOUNTED 18 GA. STAINLESS STEEL CABINET
32" HIGH, 24" WIDE, 8" DEEP. WEIGHT 100 LBS.

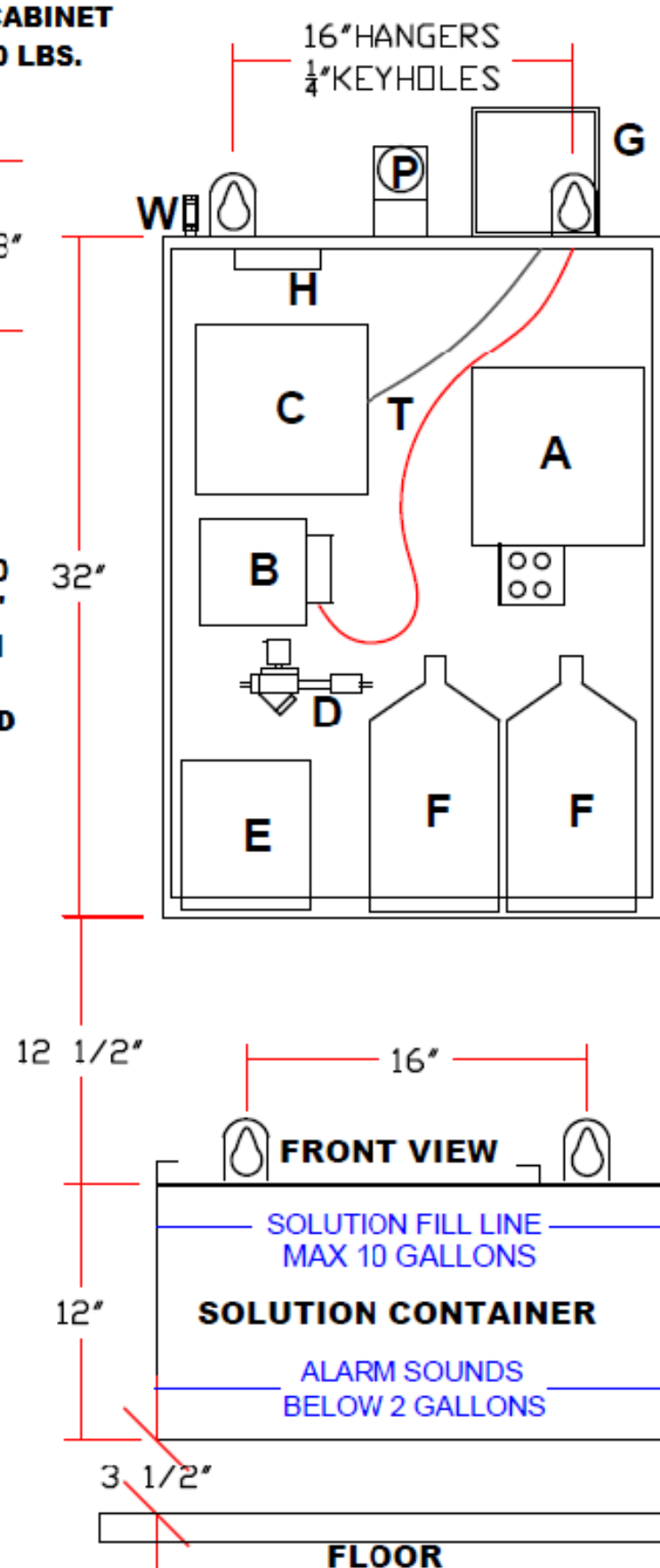


PROVIDED: 1/2" TUBE 30" LONG CONTAINING SOLUTION AND ALARM TUBES. CUSTOM LENGTHS MAY BE SPECIFIED WHEN ORDERING. OPTIMAL LENGTH IS 8 FEET OR LESS.



OPTIONAL:
10 GALLON SOLUTION CONTAINER
WALL MOUNTED 16 GA. SS, 24" WIDE, 12" HIGH, 8" DEEP

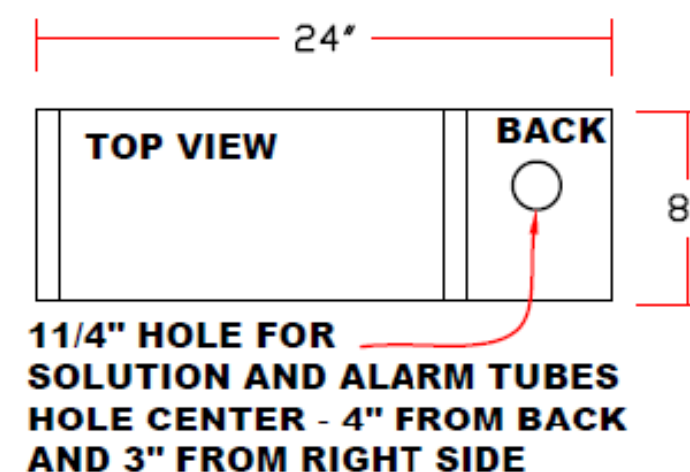
APPROXIMATE WEIGHT: 20 LBS EMPTY, 100 LBS FULL.
ALARM SOUNDS WHEN LESS THAN 2 GALLONS REMAIN.



PARTS IDENTIFICATION

- A) ENCLOSURE FOR IDEC TIME CONTROLLER
- B) 24 VOLT ODOR GONE SOLUTION PUMP
- C) 115 VOLT GAST AIR COMPRESSOR
- D) 24V SOLENOID VALVE & SOLUTION INJECTOR
- E) MIXING TANK
- F) ONE GALLON ODOR GONE CONCENTRATE
- G) 1" CONDUIT CONNECTION FOR TUBING TO MOAS MISTING NOZZLES
- H) COOLING FAN
- J) FRESH AIR INLET
- P) 115 VAC, 15 AMP SUPPLY CONNECTION
- K) CAM LATCH HANDLE
- T) AIR AND SOLUTION LINES TO NOZZLES
- W) 1/4" COLD WATER SUPPLY CONNECTION

UTILITIES REQUIRED: 115 VAC, 15 AMP CIRCUIT AND ONE 1/4" COLD WATER SUPPLY.



MOLITRON

COMPANY INC.



ETL LISTED MOLITRON ODOR ABATEMENT SYSTEM

UL 197: COMMERCIAL ELECTRIC COOKING APPLIANCES

UL 710, CLAUSE 43: FIRE & LEAKAGE TEST OF FITTINGS FOR HOOD PENETRATIONS

RECENT INSTALLATIONS

Chick-fil-A
Chipotle
Burger King
American Grind
Lazy Dog
Morning Glory
Uncle (Ramen Menu)
District Taco
OSSO

ROKO AKOR
Farmer's Table
Ritz Carlton
Alexander's Steak House
Luna Grill
Little Italy
Cooper's Pit Bar-B-Que
Mike's BBQ
Hai Dai Lao
REGRUB (Canada)

Contact US: 303.969.8888

molitron.com | cleanair@molitron.com